

Remote Desktop Connection to research Lab

Go to <https://mis.uhcl.edu>

1) Click on Remote access

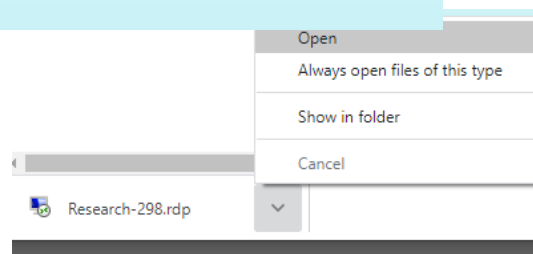


2) Click one of the Research Lab machines and open the RDP file

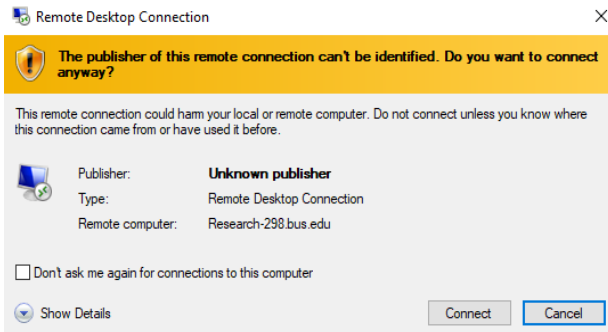
Research Lab computers

-To use the BUS domain lab machines (1)Connect to MIS network us
(2) Click and run a Microsoft Remote Desktop Link from below:
(Username:bus/(username) and Bus Domain Password)

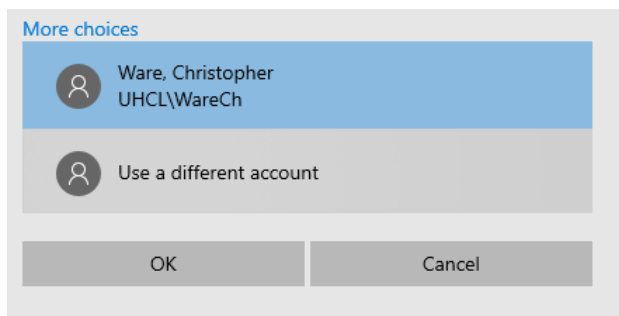
Research-298	Research-299
Research-300	Research-301
Research-302	Research-303
Research-304	Research-305



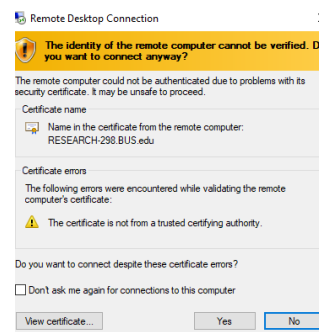
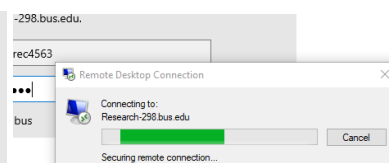
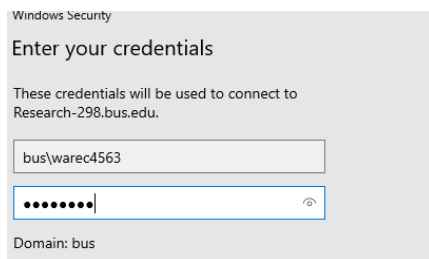
3) Click Connect on the Remote Desktop Connection:



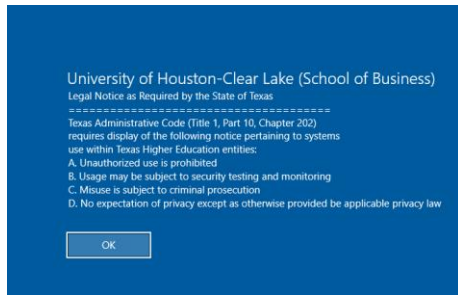
4) Click on More Choices and click "Use a different Account"



5) Enter you bus domain username and password (if you have forgotten your password go to <https://mis.uhcl.edu> and click Forgot password)



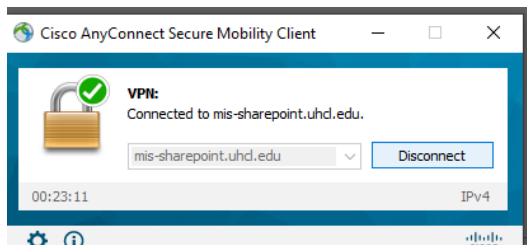
You are now logged into the machine



All work must be saved into you personal cloud storage space (Google Drive/OneDrive/Dropbox etc)

*****Please sign off the remote computer when work completed*****

******Please disconnect MIS VPN located in icon tray******



FYI

The following message appears when machine is being used

There are 2 option

- 1)Click yes and wait 30s for a response if no one response you will be connected
- 2)While connected to VPN, click and login to another Research Lab machine

