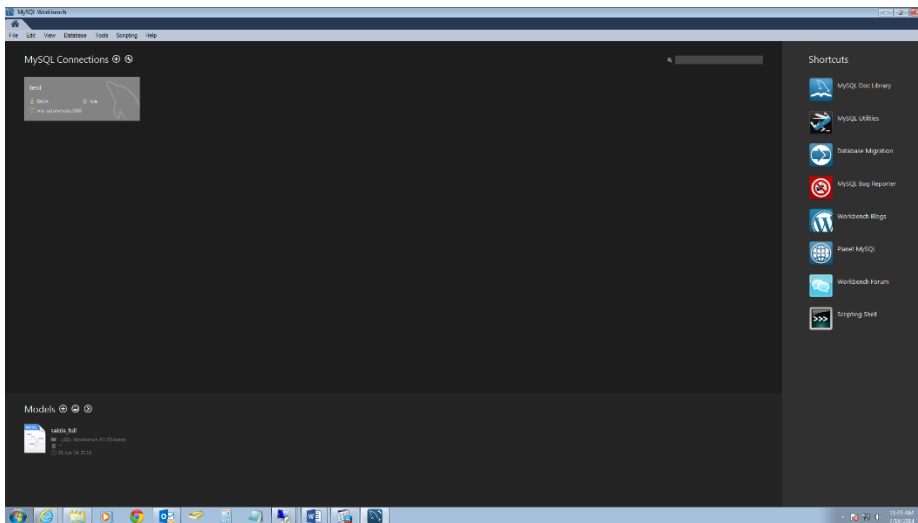


## 1) Open MySQL Workbench

Next to MySQL Connections click “+”

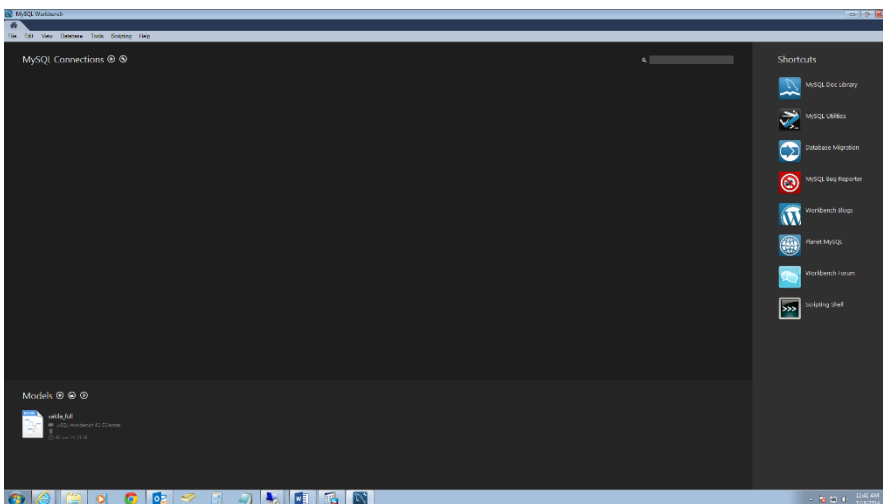


## 2) Create a name for the connection

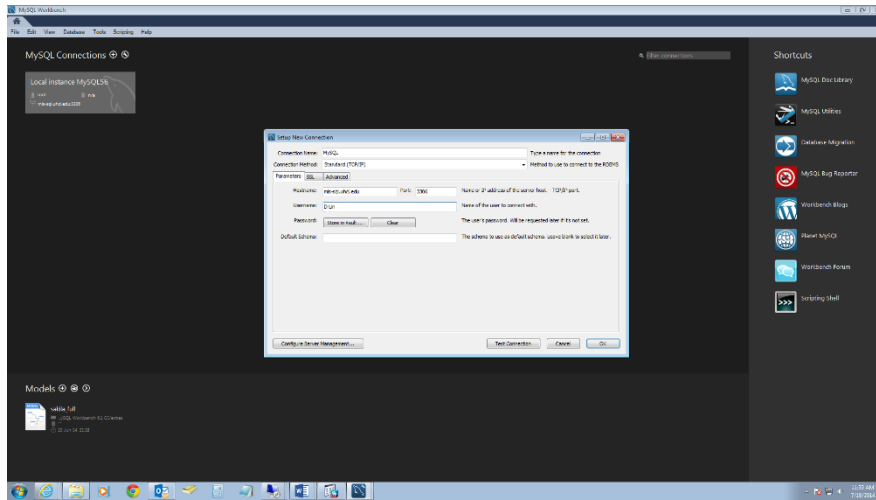
Hostname: mis-sql.uhcl.edu

Username: your username (ex testa2578) lowercase and first 15 characters only

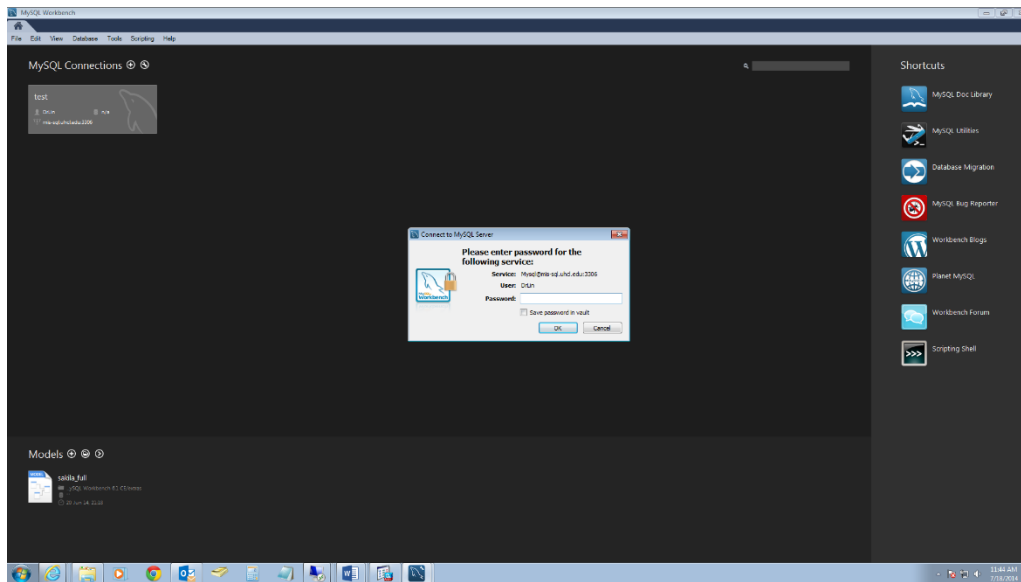
Click: Click OK



3) Double Click the MySQL Connection you just created



4) Password: enter your 7 digit student id



## 5) Your Database is located under SCHEMAS

